

Paper City Savings Bank  
CRA Assessment Area

The Association's CRA Assessment Area is comprised of the following Census Tracts:

Wood County

108  
109  
110  
111  
112  
113  
114  
115  
116  
117

Portage County

9602  
9603  
9604  
9605  
9607.01  
9607.02  
9608  
9609  
9610  
9611.01  
96.11.02  
9612

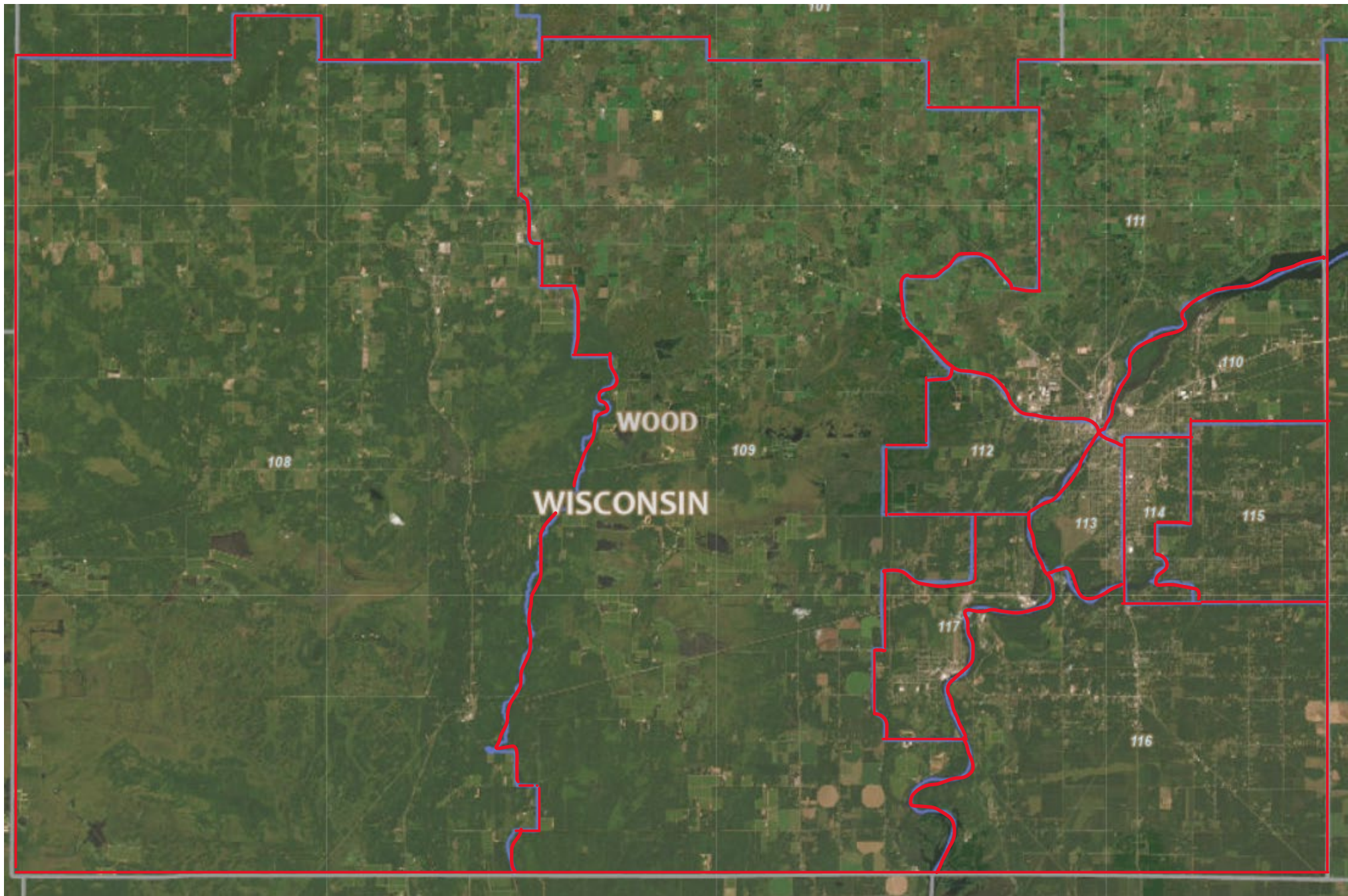
Adams County

9501

Juneau County

1001

# Wood County Assessment Area



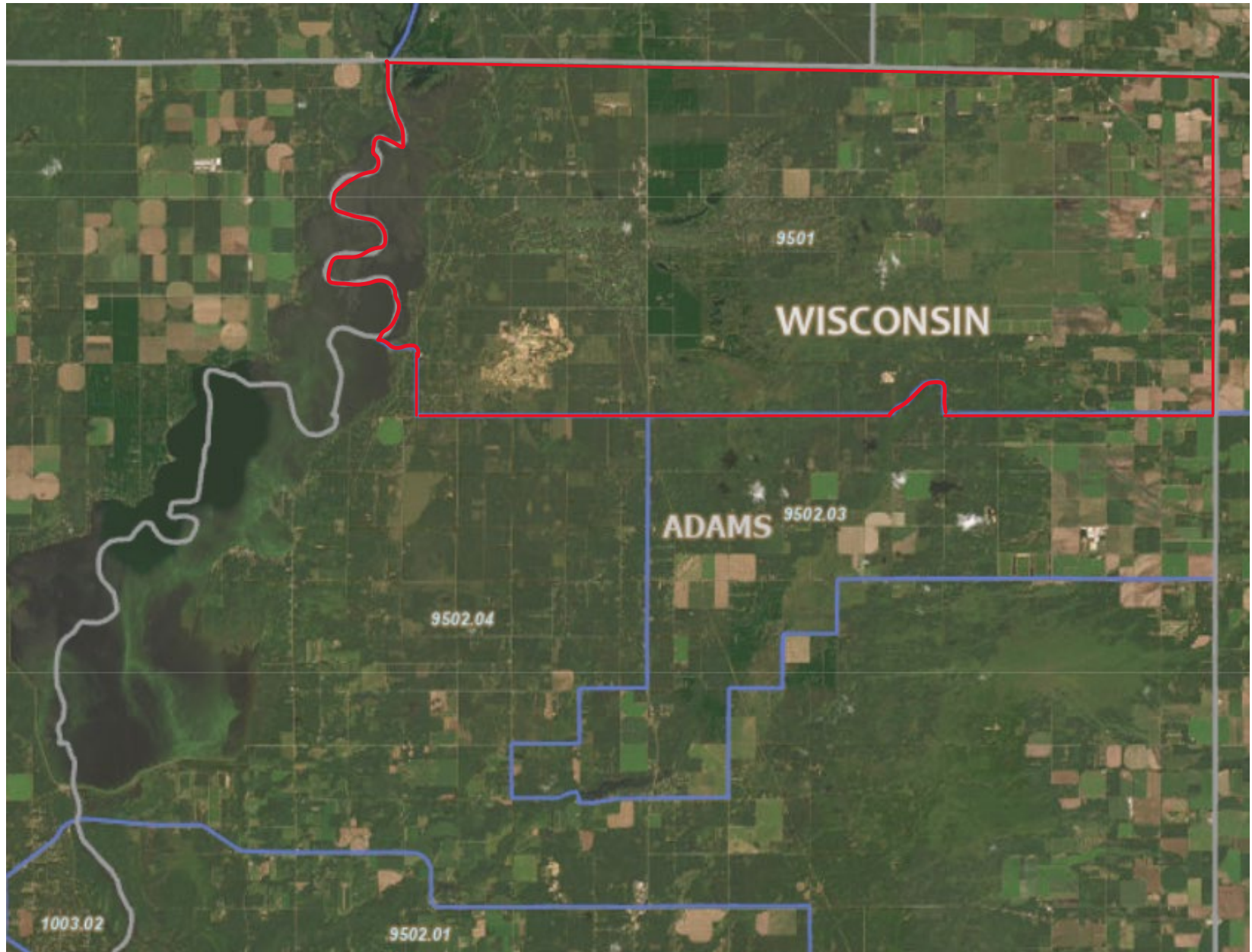
# Portage County Assessment Area



# Portage County Assessment Area



# Adams County Assessment Map



# Juneau County Assessment Map

